

Lightsource Test Report

Product Infomation

Product Category: LED STRIP	Product Type: LED STRIP
Product Spec: DRAC 1	Product Number: 228
Manufacturer: TECSOLEED S.L.	Buyer: TECSOLEED S.L.

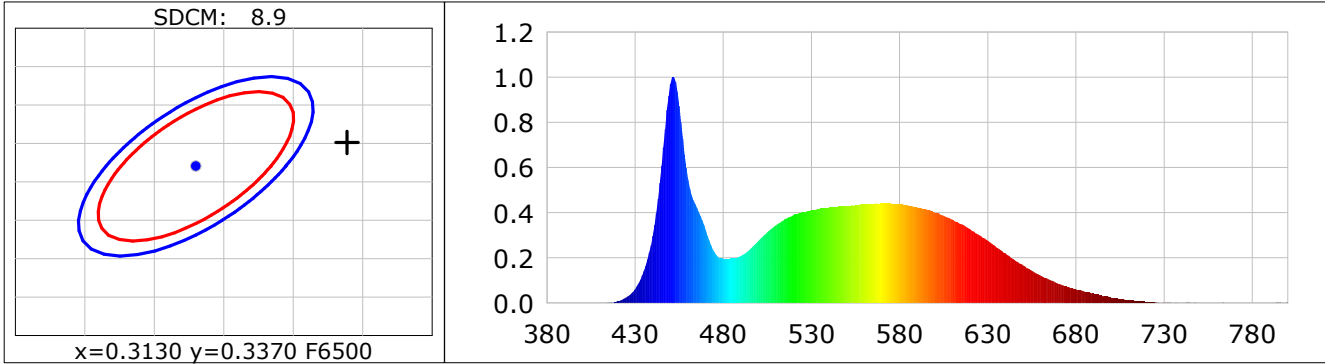
CIE Colorimetric Parameters

Chromaticity coordinates: $x=0.3239$ $y=0.3401$ $u(u')=0.2014$ $v=0.3172$ $v'=0.4758$
 CCT: $T_c=5890K$ ($duv=0.00342$) Color Ratio: $R=0.140$ $G=0.809$ $B=0.051$
 Peak Wavelength: 451.5nm Half Bandwidth: 17.7nm
 Dominant Wavelength: 501.3nm Color Purity: 0.029
 CRI: $R_a=82.0$, $avgR(1\sim14)=74.1$, $avgR(1\sim15)=74.2$ TM30: $R_f=81$, $R_g=94$
 GAI: $GAI_BB_8=90.1$, $GAI_BB_15=96.1$, $GAI_EES=85.1$

R1 =80	R2 =87	R3 =91	R4 =81	R5 =81	R6 =82	R7 =87	R8 =67
R9 =1	R10=69	R11=80	R12=54	R13=82	R14=95	R15=75	

 Color Quality Scale: $Q_a=79.8$, $Q_f=79.8$, $Q_p=80.1$, $Q_g=91.1$

Q1 =82	Q2 =98	Q3 =75	Q4 =70	Q5 =77	Q6 =80	Q7 =85	Q8 =89
Q9 =96	Q10=86	Q11=81	Q12=80	Q13=81	Q14=69	Q15=74	



Photometric Parameters

Luminous Flux: 1123.4 lm	Efficiency: 133.76 lm/W	Radiant Power: 3.455 W
Total mains efficacy: 123.86 lm/W	Energy Efficiency Class: E (EU 2019/2015)	

Electric Parameters

Voltage: 24.000V	Current: 0.3500A	Power: 8.40W
Power Factor: 1.0000	Frequency: 0.00Hz	

Test Infomation

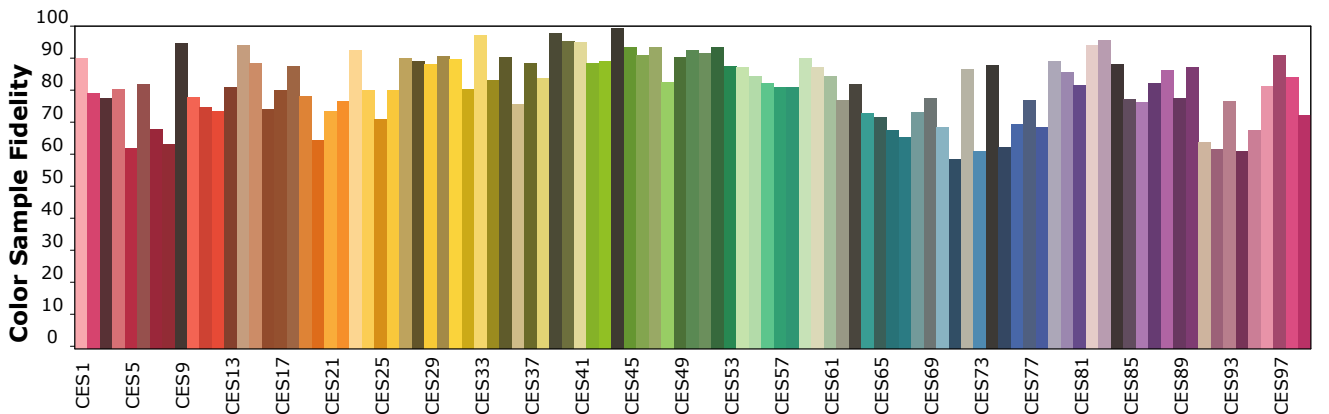
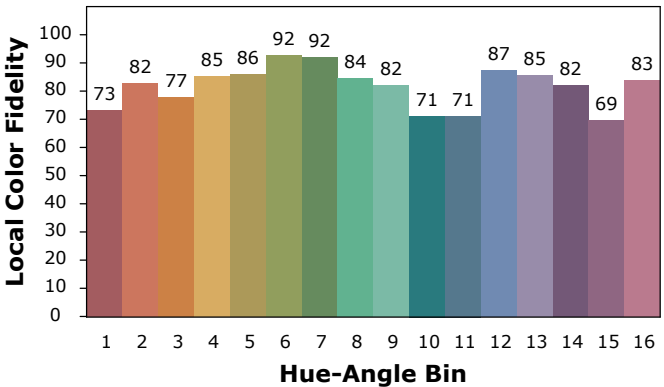
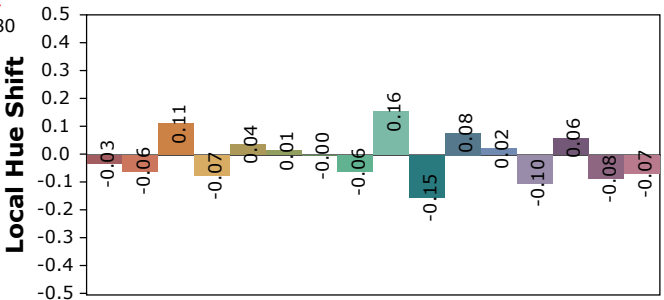
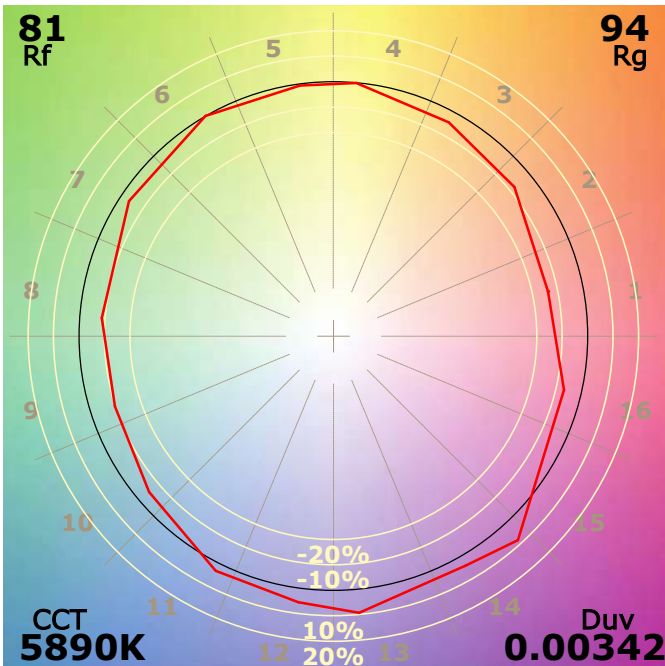
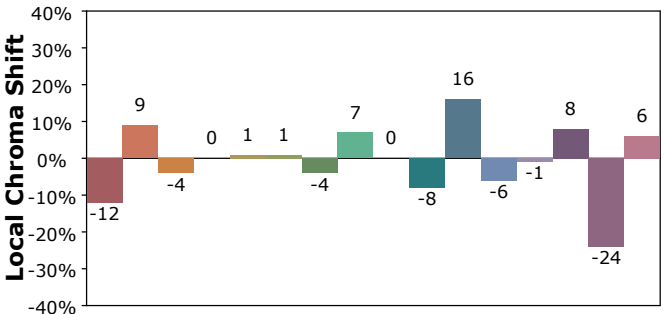
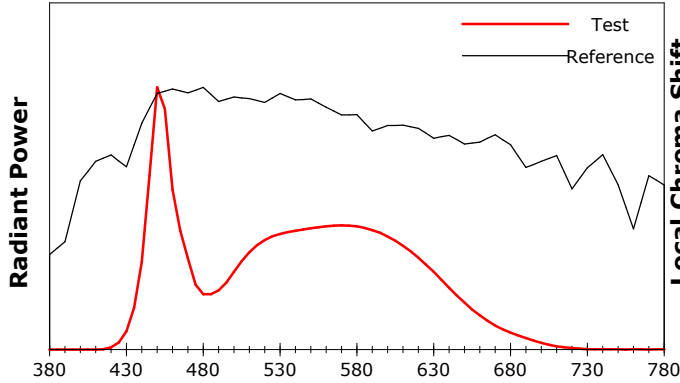
Scan Range: 380~800:1nm	Photometric Method: sphere-spectroradiometer
Stabilization Time: 0 Sec ALC.: 1.0000	Photometric Condition: Sphere diameter: 1.50m, 4PI
Max of Signal: 46071 (2135)	CCD Integration Time: 282.99 ms

IES TM-30-18 Color Rendition Report

Product Information

Product Category: LED STRIP
 Product Spec: 21059602440513
 Manufacturer: TECSOLED S.L.

Product Type: LED STRIP
 Product Number: 228
 Buyer: TECSOLED S.L.



Condition: Tx:20.1°C, Ti:19.0°C, R.H.:60%
 Test Lab: TECSOLED S.L.
 Operator: JORDAN GIL DIAZ

Test Device: Inventfine CMS-2S (Plus)
 Test Time: 2021-10-28 11:11:08
 Inspector: